



Recent Openings

- 7 Brew (Gateway Drive)
- Take 5 (Gateway Drive)
- Five Guys (Clairemont Ave)
- Wingstop (Clairemont Ave)
- Scooters Coffee (Hwy 93)
- Circle K (multiple locations)
- Culvers (Hwy 312)

Coming Soon

- Chipotle (River Prairie)
- Crew Car Wash (Golf Rd)
- Burlington (Commonwealth Ave)
- Circle K (multiple locations)
- Jimmy John's (Lake Hallie)
- Aspirus Health Hospital (Chippewa Falls) - Non-Retail

Notes/Highlights

- Oakwood Mall traffic has been increasing, with a 3% jump in the last year
- River Prairie continues to fill in, with the last remaining site slated to start development in 2026
- Clairemont Ave is seeing strong demand with the addition of Five Guys and Wingstop and interest still growing

Placer Rankings (WI)

Wal-Mart (Eau Claire)	3/86
Wal-Mart (Lake Hallie)	6/86
Target	2/37
Menards (East)	3/44
Menards (West)	7/44
TJ Maxx	1/25
Kohl's	9/40
Ross	2/27
Buffalo Wild Wings	1/28
Chick-fil-A	15/19
Hobby Lobby	3/27
Michaels	6/20
Aldi (Eau Claire)	3/85
Chipotle (Golf Rd)	7/31
Chipotle (Clairemont Ave)	5/31
Hy-Vee	2/9
Texas Roadhouse	2/15
Noodles & Co	3/55
HomeGoods	4/13
Olive Garden	3/17

- Chippewa Falls is having additional growth, with Festival Foods expecting to increase traffic now that Family Fare has closed. Kwik Trip at Chippewa Crossing is the busiest in a 15 miles radius and Aspirus Health is under construction on a new hospital.

For more information,
please contact:



Ryan Erickson
o: 715 456 7746
e: ryan@naicommonweal.com

EAU CLAIRE AREA RETAILER MAP





Placer Rankings (WI)

Wal-Mart (Onalaska)	4/86
Wal-Mart (La Crosse)	38/86
Target	1/37
Menards (Onalaska)	11/44
Menards (La Crosse)	25/44
TJ Maxx	19/25
Kohl's	7/40
Ross	4/27
Buffalo Wild Wings	3/28
Chick-fil-A	10/19
Hobby Lobby	6/27
Michaels	15/20
Aldi (Onalaska)	8/85
Chipotle	1/31
Hy-Vee	5/9
Texas Roadhouse	1/15
Noodles & Co	13/55
HomeGoods	6/13
Olive Garden	9/17

Recent Openings

- Raising Cane's (Hwy 16)
- Panda Express (Hwy 16)
- Mister Car Wash (Hwy 16)
- McDonald's (Holmen)
- Mayo Clinic Store (Mormon Coulee Rd)

Coming Soon

- Chipotle (Mormon Coulee Rd)
- 7 Brew (Hwy 16)
- La-Z-Boy (Hwy 16)
- Crew Car Wash (Hwy 16) - on hold

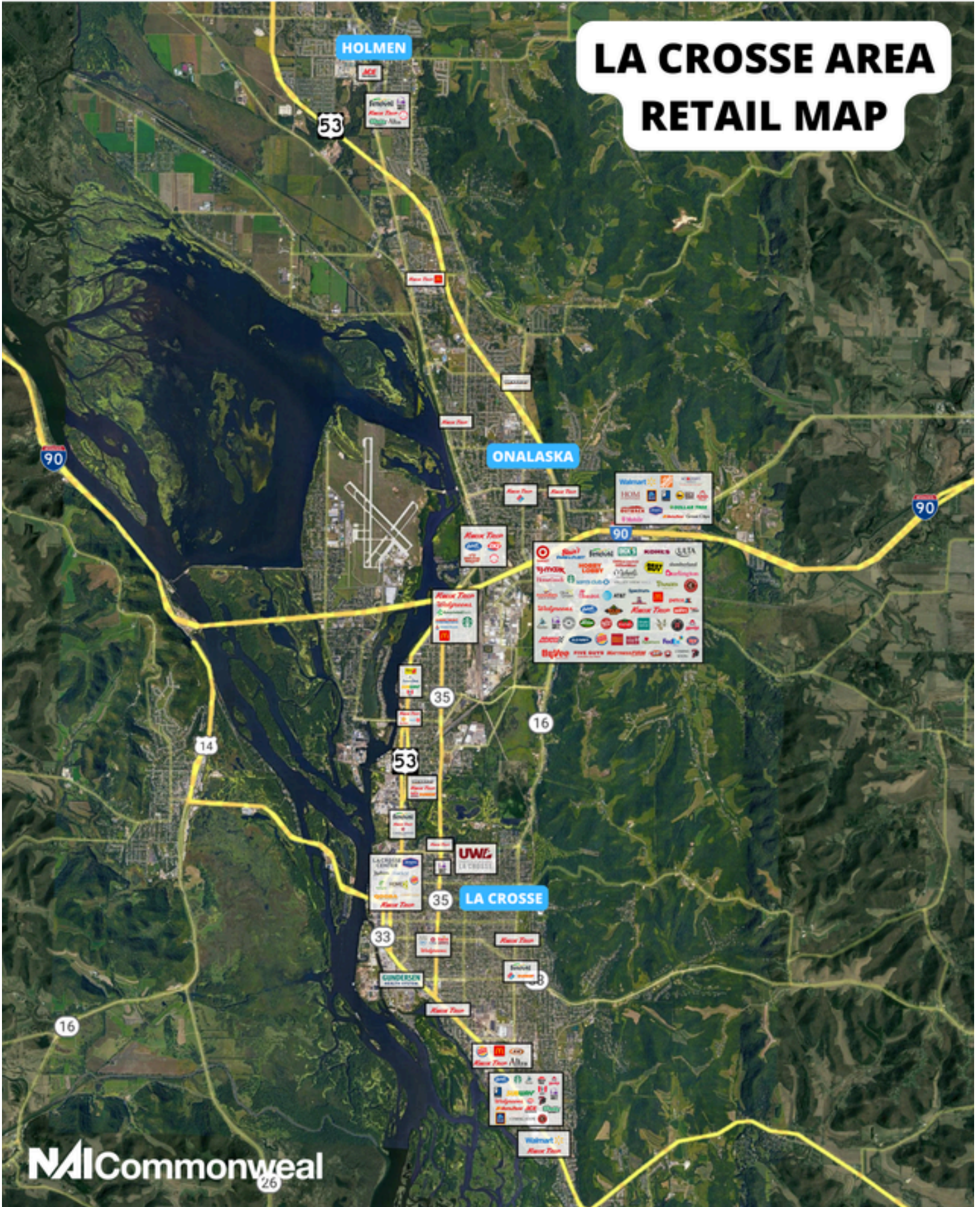
Notes/Highlights

- Hwy 16 continues to thrive, with new users like Raising Cane's and Panda Express open, 7-Brew and La-Z-Boy coming soon
- Valley View Mall is struggling with high vacancy and lack of national tenants
- South side of La Crosse is seeing growth with users like 7 Brew, Aldi and Mayo Clinic Store open, Chipotle coming soon
- Holmen area continues to grow on the residential side, with hopes for more commercial development in the future

For more information, please contact:



Ryan Erickson
 o: 715 456 7746
 e: ryan@naicommonweal.com



**LA CROSSE AREA
RETAIL MAP**