



ATTRACTING CORPORATE INVESTMENT TO SOUTHEASTERN WISCONSIN



MILWAUKEE 7

The bottom section of the image shows a rocky shoreline with large, grey stones in the foreground and dark water. The "MILWAUKEE 7" logo is overlaid on the left side of this section, with the number 7 inside a white circle.

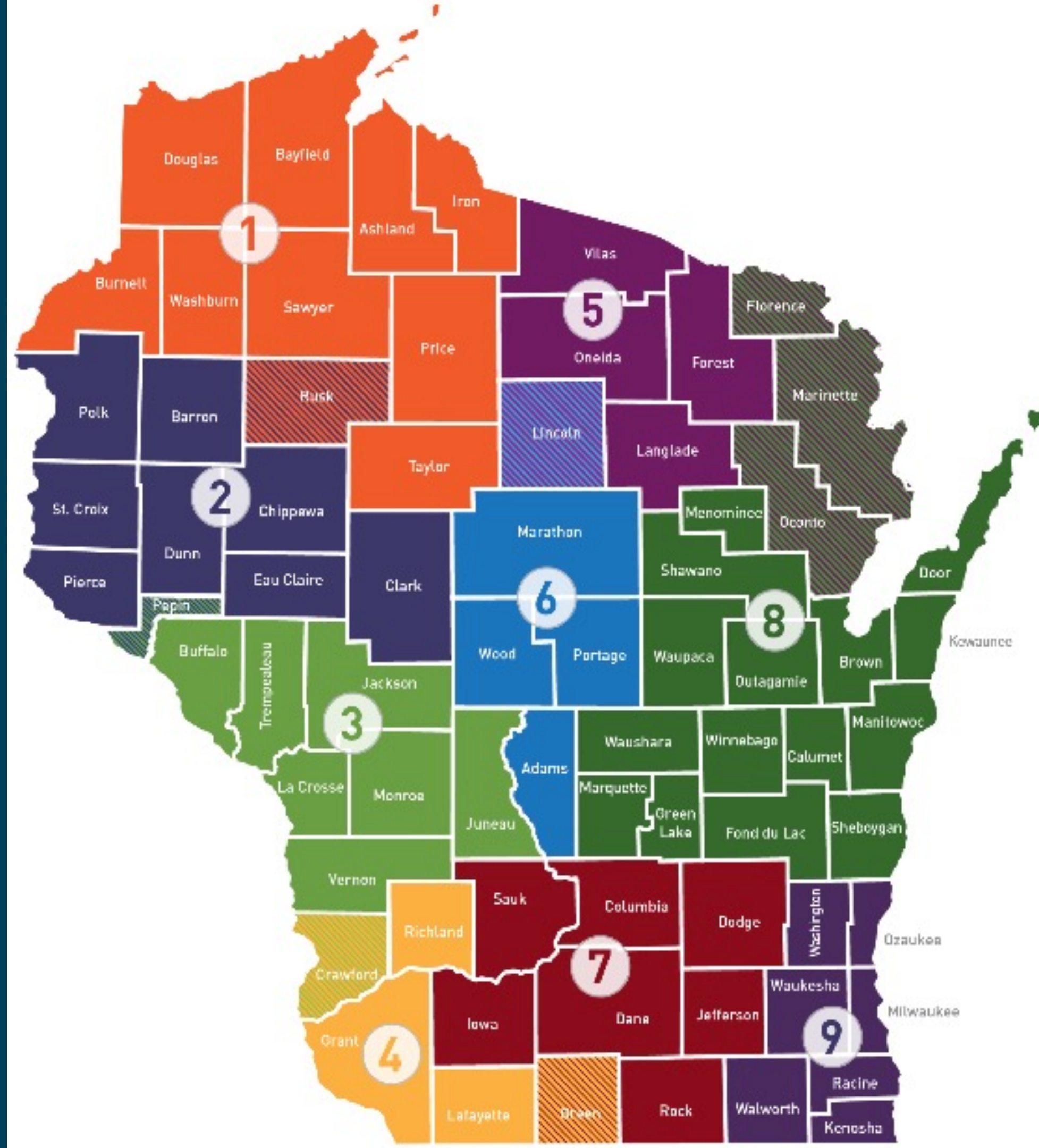
MILWAUKEE 7



**REGIONAL ECONOMIC
DEVELOPMENT ENTITY
FOR SE WISCONSIN**

REGIONAL ECONOMIC DEVELOPMENT ORGANIZATIONS

1. Visions Northwest
2. Momentum West
3. 7 Rivers Alliance
4. Prosperity Southwest
5. Grow North
6. Centergy
7. Madison Region Economic Partnership
8. The New North
9. Milwaukee 7



Our Job

**Work directly with
companies looking to
create jobs and invest
capital in our region**

127 PROJECTS

27,200 JOBS

\$1.6 BILLION PAYROLL

\$5.3 BILLION INVESTMENT

2005

**“M7 should focus
on helping
existing
companies to
expand and
grow.”**

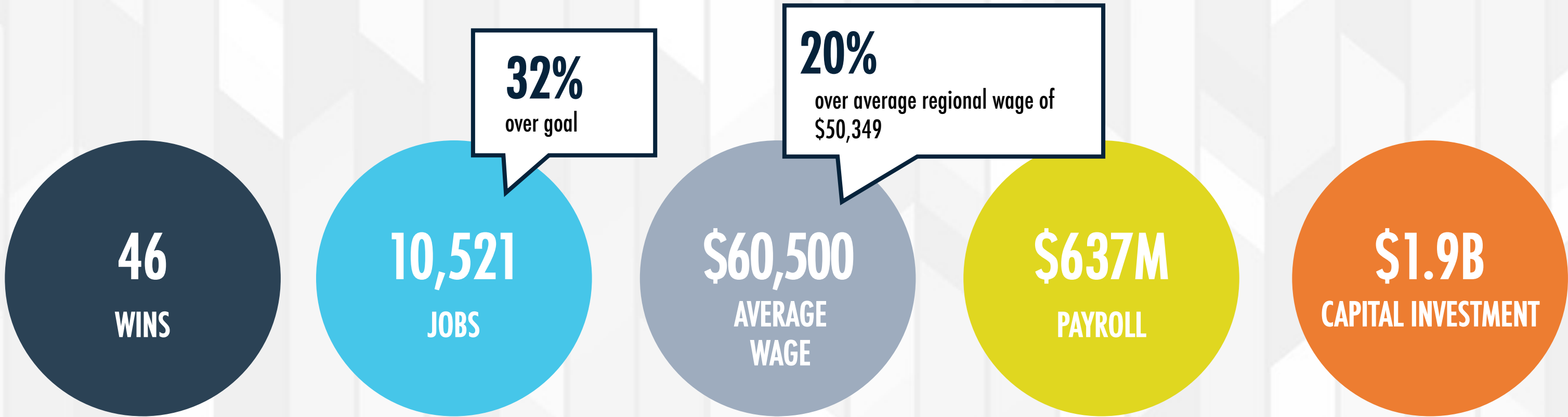
2023

“M7 should focus on helping existing companies to expand and grow.”

“M7 should attract **new companies** to the region.”

Corporate Attraction & Expansion

2015-2019 Scorecard



ATTRACTION	24	2,739	\$58,515	\$161M	\$1.0B
------------	----	-------	----------	--------	--------

CORPORATE ATTRACTION / EXPANSION GOALS: 2020 – 24

Goal
8,800

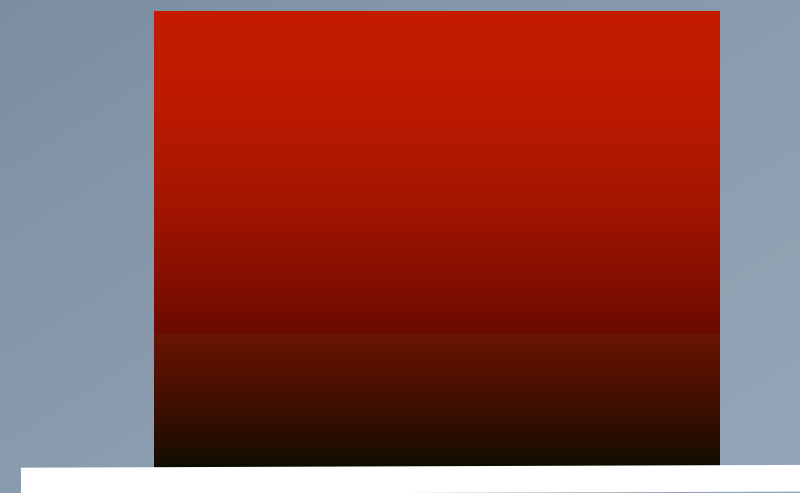
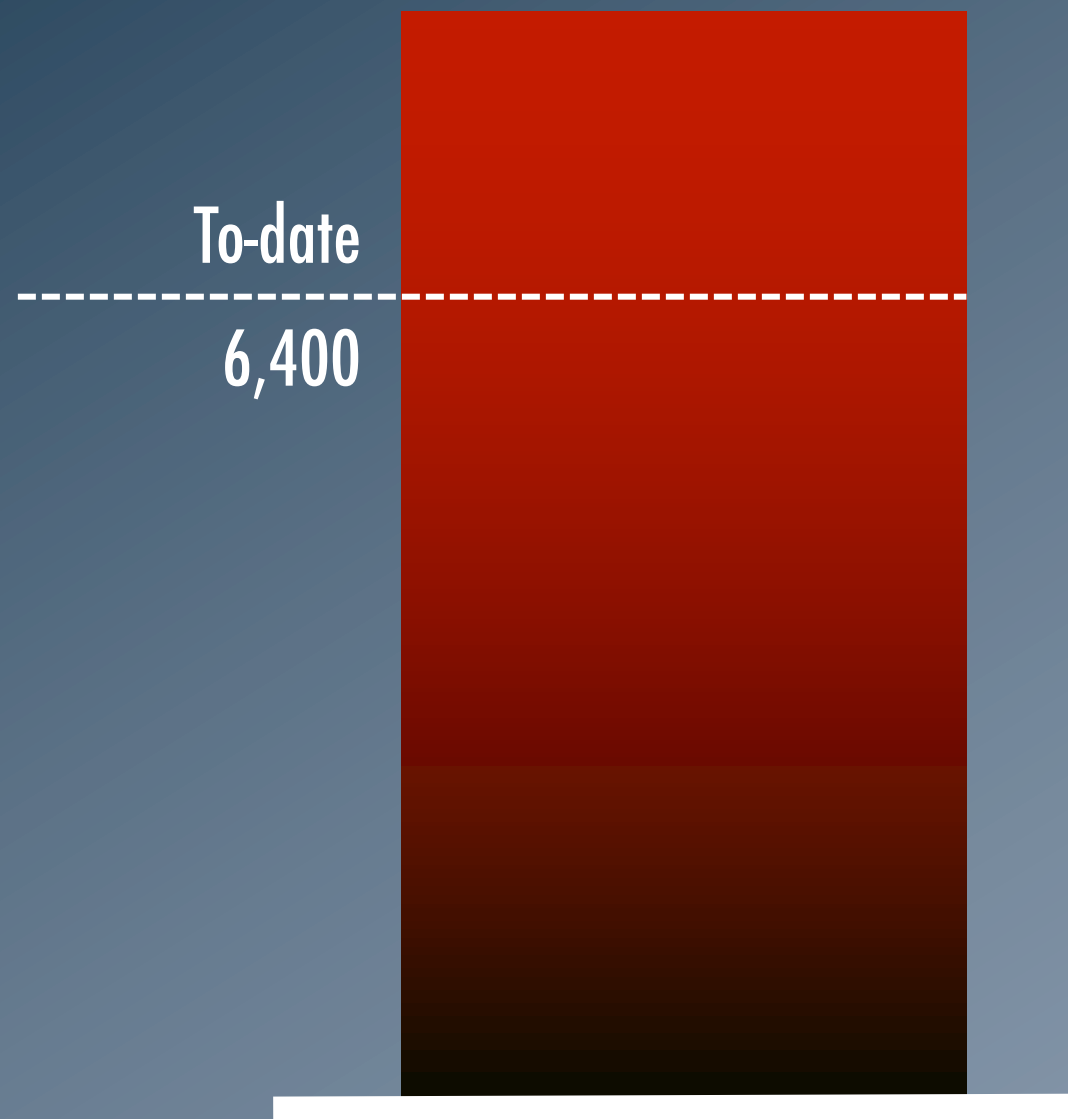
To-date
\$2.59B

To-date
6,400

Jobs

Goal
\$1 billion

Capex





27 new projects

Average wage:
\$72,490



MILWAUKEE



fiserv.



Pewaukee



MENOMONEE FALLS

HA COUNTY
R FOR GROWTH
s. Growing communities.

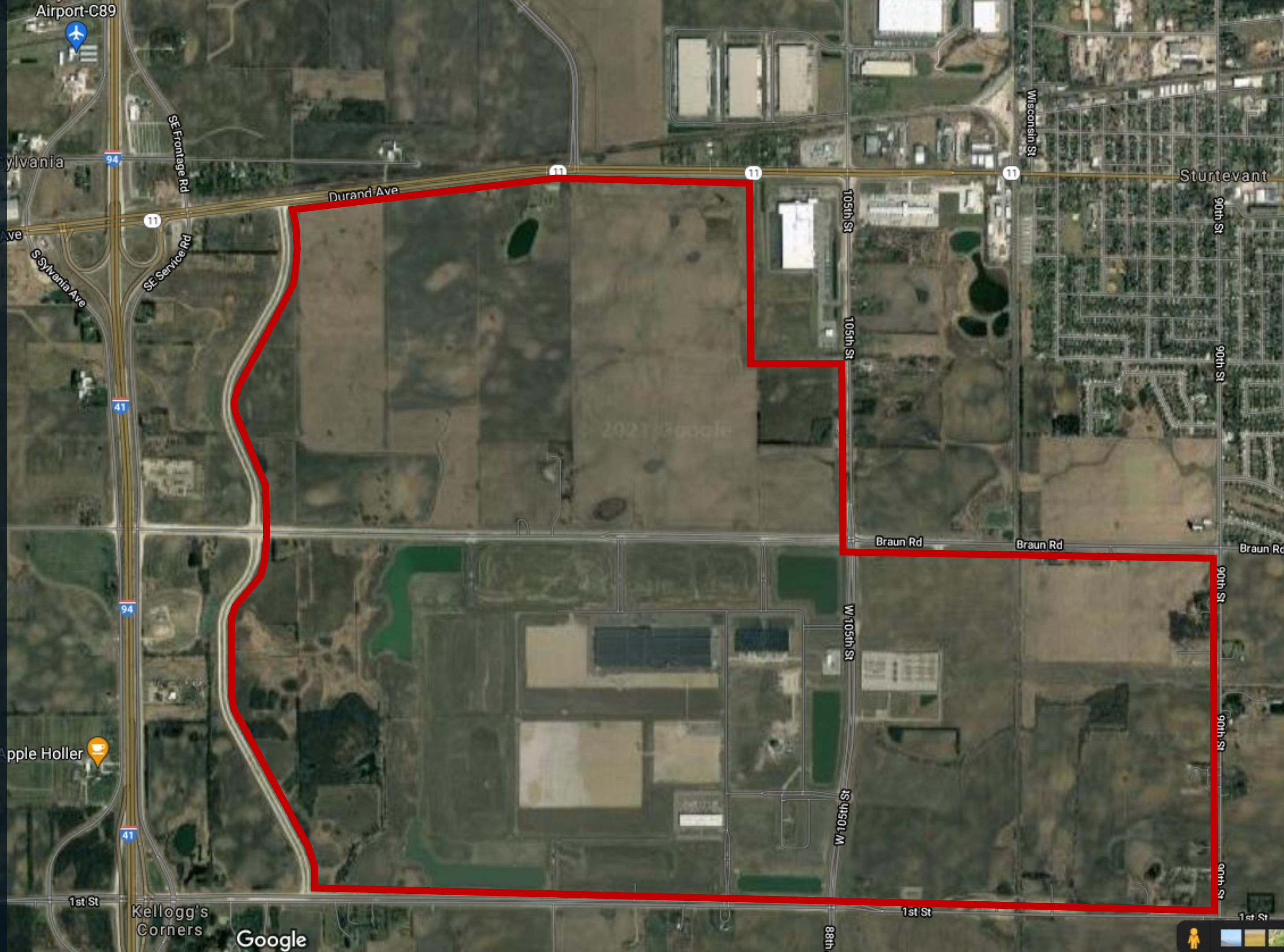
OF
omonee
Falls



Milwaukee®

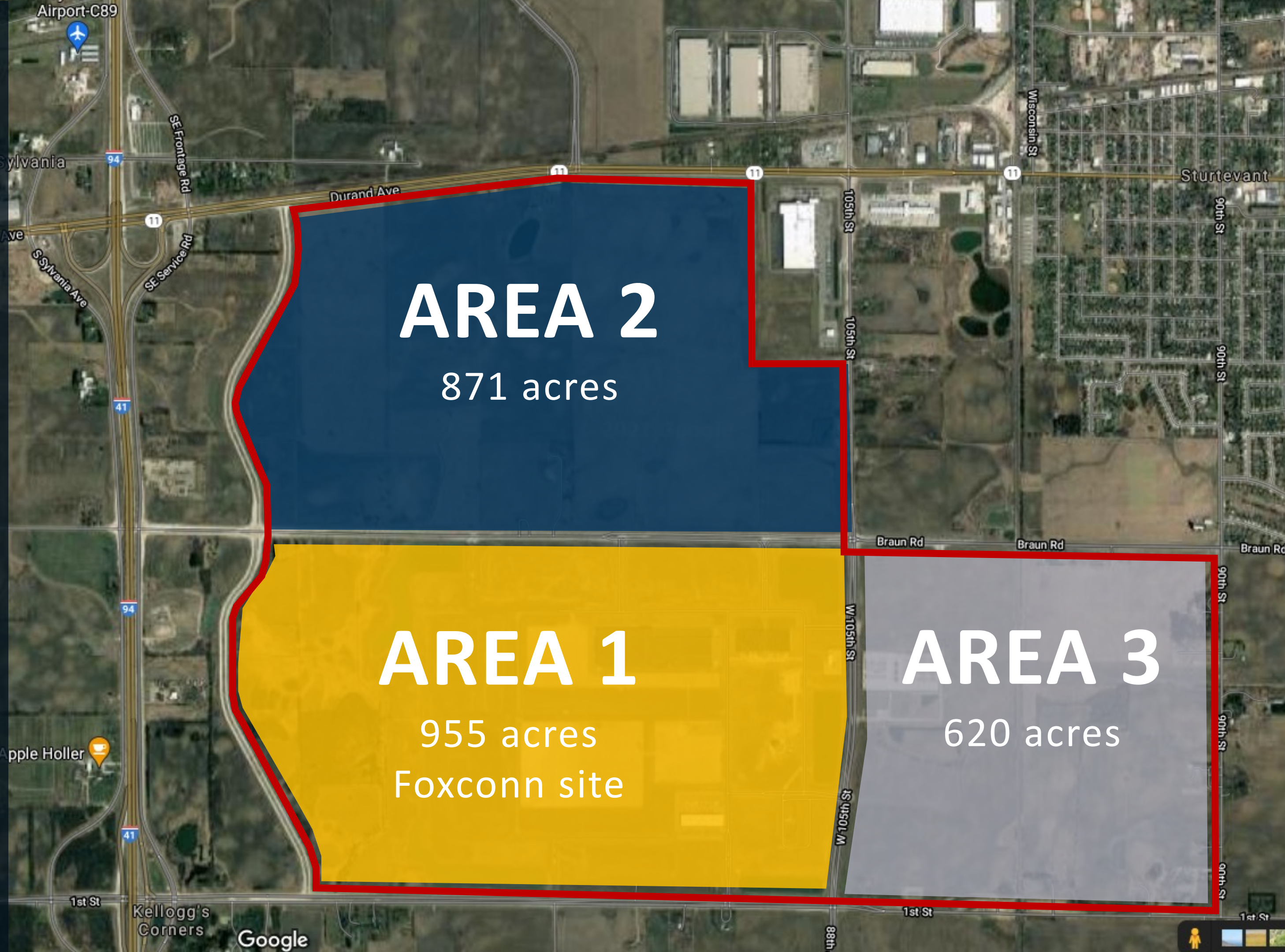


2,446 acres



MOUNT PLEASANT SITE

2,446 acres



MOUNT PLEASANT SITE

- Assembled in 2017 to support Foxconn's planned liquid crystal display (LCD) fab campus
- Fully built infrastructure and utilities suitable for an industrial megaproject

Highway	I-94 reconstructed, 2 interchanges serve site	\$410 million
Local roads	All roads abutting site (4-6 lanes) rebuilt	\$292 million
Electric	Multiple redundancy, 1,000 MW capacity	\$147 million
Gas	Multiple redundancy, 1 million MCF capacity	\$173 million
Water	7 MGD capacity	\$100 million
Wastewater	5 MGD capacity	\$83 million

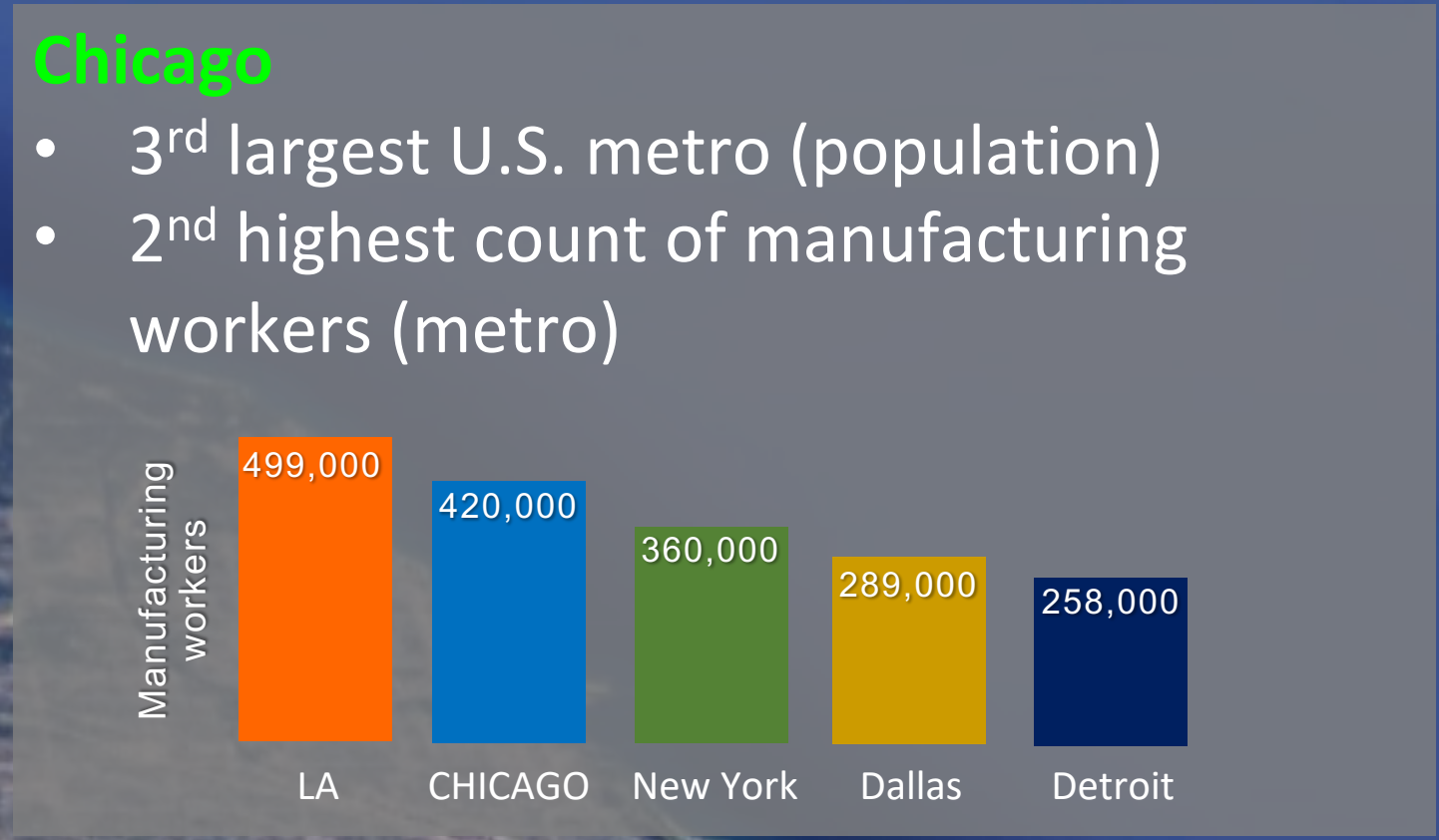
TOTAL

\$1.2 billion



Milwaukee

- 3rd highest concentration of manufacturing employment among large U.S. metros
- Focus on electrical component manufacturing – power, energy, automation, controls – and highly engineered, precision products



Chicago



MILWAUKEE